



No.	Issue Name	Date

Legend / Notes

Architectural Square Footage	1845 Sq Ft 171 Sq M
Terrace Square Footage	254 Sq Ft 24 Sq M

This DD set is not coordinated with the following consultants:
 - Lighting Designer
 - Hospitality (Kitchen, Laundry, Spa)
 - Interior Designer

Design Development

100% Submission

Client:
 SC Property Acquisition, LLC
 176 NE 43 Street
 Miami, Florida 33137 USA
 Tel: +1(305) 571 8228
 Fax: +1(305) 576 1822

Architects:
 Richard Meier & Partners, Architects LLP
 475 Tenth Avenue, 6th Floor
 New York, New York 10018 USA
 Tel: +1(212) 967 6060
 Fax: +1(212) 967 3207

In Collaboration with:
 Kobi Karp Architecture and Interior Design, Inc.
 2915 Biscayne Boulevard, Suite #200
 Miami, Florida 33137 USA
 Tel: +1(305) 573 1818
 Fax: +1(305) 573 3766

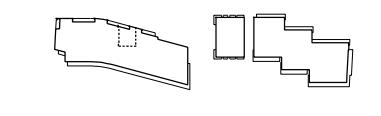
Structural Engineer:
 DeSimone Consulting Engineers
 800 Brickell Avenue, 6th Floor
 Miami, FL 33131
 Tel: +1 (305) 441-0755
 Fax: +1 (786) 383-2329

MEP Engineer:
 Steven Fuller P.E., Inc.
 500 N.E. Third Avenue
 Fort Lauderdale, FL 33301
 Tel: +1 (954) 467-1402
 Fax: +1 (954) 467-5752

Landscape Designer:
 Fernando Wong Outdoor Living Design
 1504 Bay Road, Suite 2705
 Miami Beach, FL 33139
 Tel: +1 (305) 321-0546

Landscape Architect of Record:
 EDSA
 1512 E. Broward Boulevard, Suite 110
 Fort Lauderdale, FL 33301
 Tel: +1 (954) 524-3330
 Fax: +1 (954) 524-0177

Surf Club
 Miami, Florida



South Condo
 Unit D3
 Floors 7-9

Date	18 October 2013	Sheet No.	I-120 SD3
Scale	1/8" = 1'-0"		
Project	12140		